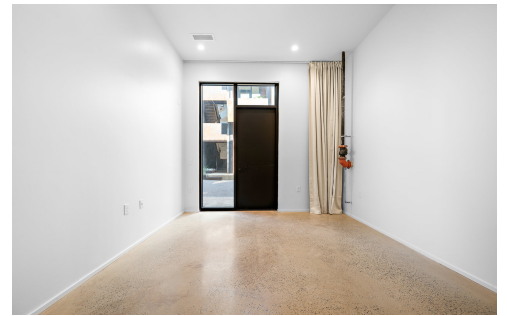
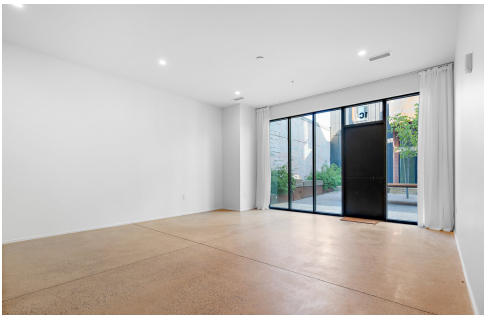




2323 2ND AVE S #1C



\$2,150/month

Bedrooms: 1 Full Baths: 1 Half Baths: 0 Levels:

MLS#: 21393067

PROPERTY DESCRIPTION

This 1110 sf unit is PERFECT for a Live/Work scenario, what a lucky find downtown! Brand new, large, modern, convenient condos walkable to UAB, RRPark, The Battery, Rotary Trail, Pepper Place & north side nightlife. Designed by San Francisco's renowned David Baker Architects to bring a thoroughly fresh aesthetic to Birmingham, this new, unique unit includes oversized windows bringing in tons of light from the private courtyard. Sleek kitchen includes European matte black cabinets with oak accents & Caesar stone counters, high end GE & Bosch appliances (convection wifi enabled oven, super quiet dishwasher, ice maker) & handmade tile. Washer and dryer included. Polished concrete floors throughout. With an extra den off the hall, options for more sleeping or a private workspace abound. Smart-gated entry to landscaped courtyard with grill/communal table. Ample unmetered street parking. Be the first to live or work in this brand new courtyard level unit!



Bradley
Perlis
Group

Bradley Perlis Group
LAH Sotheby's International - Homewood

bpg.sothebysrealty.com



LAH | **Sotheby's**
INTERNATIONAL REALTY